



**American Lands Access Association, Inc.**

[www.amlands.org](http://www.amlands.org)

[alaa@amlands.org](mailto:alaa@amlands.org)

Volume 14 Issue 4

July - December 2022

# **SEASONS GREETINGS TO ROCKHOUNDS ACROSS THE COUNTRY**

**H  
A  
P  
P  
Y**



**N  
E  
W  
  
Y  
E  
A  
R**

Material from ALAA Newsletters may be duplicated for non-commercial purposes with appropriate credits. For commercial use, individual authors must be contacted for approval. Articles lacking bylines have been generated by the bulletin staff. Direct other questions to the Editor at: [editor@amlands.org](mailto:editor@amlands.org)

**Jennifer Haley**  
**American Lands Access Association - Vice President**  
jennifer.haley@amlands.org

**Important**  
**Working on The Rockhound Definition to be Added to the**  
**Federal CFR Title 43**  
**and the BLM-Mojave Trail National Monument**

For the past several years there have been sporadic articles in the newsletters of ALAA, CFMS and AFMS about the importance for rockhounds to work together on creating a rockhounding definition to be added to the CFR Title 43. What is in the current CFR Title 43 can't be changed, but we can add to it. There has been little to no response from the rockhounding community on this project. In borrowing a phrase, we are at a critical point between a rock and a hard place.

Let's bring you up to date. This August, the BLM-Mojave Trails National Monument stated publicly they have no intention of preventing rockhounding in the monument. That was music to our ears. The BLM wouldn't have arrived at that conclusion had it not been for rockhounds getting involved and staying involved in enough numbers and quality of public comments, which included submitting their routes to collecting. However, BLM also stated they don't know how to manage rockhounding in the monument, and are asking for the input from the rockhounding community. BLM does report to the Dept of the Interior, which means BLM needs to come up with a plan of management specifically for our recreation. BLM has requested rockhound input about how much we will be allowed to collect, when and how in the monument.

It is important to remember collecting in this monument is a first, only because rockhounds got involved in the very beginning of the monument's planning. All current monuments do not allow collecting. If rockhounds do not submit suggestions for limits on collecting and how best to manage rockhounding in the monument, the BLM-MTNM management will have to. Since the BLM has asked us for our input, we need to become the mapmakers for our future in the MTNM. This is a first also, to be asked to be involved in setting regulations on public land, let alone in a monument.

This brings our attention back to the Federal CFR Title 43. It will be much to our advantage if we submit written language for our collecting limits rather than government doing it without consulting us. Please keep in mind that more than one definition can be submitted to the BLM-MTNM and for the Federal CFR Title 43.

If you don't think more limits are in our collecting future, it is time to think again. The state of Arizona for example has set a limit on how much a person can collect per day and annually of rocks, minerals and semiprecious gems. It will be so much easier and in our better interest if we set the parameters for recreational rockhounding, instead of feeling shocked later we had no choice in the matter. The sooner we can establish a rockhound definition, the better.

One of the ALAA officers spoke with two congressmen a couple of years ago about helping us introduce a rockhound definition to add to the CFR 43 in congress. They agreed. That conversation needs to be updated. Because it is an honor as it has always been in respecting the AFMS Code of Ethics, we are ***Continued on Page 3.....***

becoming recognized for our stature and public image by public land management. This is occurring by those of you who have come together to work in partnership with public land managers. You are showing them we are good people to work with, and that we appreciate and protect our heritage of natural resources as well while enjoying our recreation.

Below is one proposal of what the Rockhound Definition could look like. Bear in mind, some states have already regulated how many pounds of rocks, invertebrate fossils and semiprecious gems one person can collect per day and annually. Feedback and suggestions please.

### **Rock, Mineral, Common Invertebrate Fossils, Semi-Precious and Precious Gemstone Collection Limits**

Rocks, Minerals, Common Invertebrate Fossils, Semi-Precious, Precious Gemstones may be collected on public lands managed by the Bureau of Land Management and Forest Service without charge or permit as long as:

- The specimens are for personal use and are not collected for sale, barter or any other commercial purpose (s).
- Reasonable amounts of specimens can be collected. "Reasonable" limits for personal use defined as up to one five-gallon bucket plus one piece per day, with a total limit of not more than 250 pounds per year by one person. These limits are for rocks, minerals, common invertebrate fossils, semi-precious and precious gemstone.
- A group of people do not pool their yearly allotment to collect a piece larger than 250 pounds of rockhounding specimens.
- Collection does not occur in developed recreation sites or areas, unless designated as a rockhounding area by BLM or Forest Service.
- Collection is not otherwise prohibited or restricted and posted.
- Collection, excavation or removal are not aided with motorized, mechanical devices, including heavy equipment or explosives. Metal detectors are acceptable in areas designated by BLM and Forest Service.
- No undo or unnecessary degradation of the public lands occurs during the removal of rocks, minerals, common invertebrate fossils, semi-precious and precious gemstones.
- For specimens heavier than 250 pounds or situations not covered in the Free Rock, Mineral, Common Invertebrate Fossils, Semi-Precious and Precious Gemstone Collection Limits, person (s) must contact the appropriate BLM or Forest Service office.
- If more than 250 pounds of specimens is wished to be obtained, or in situations not covered in the, Free Rock, Mineral, Common Invertebrate Fossils, Semi-Precious and Precious Gemstone Collection Limits, person (s) must contact the appropriate BLM or Forest Service office and inquire about arranging a permit.

## **Fieldtrip Journal for Public Lands** **(Blank Forms are on Page 4 & 5)**

This is the simple Journal to document your Fieldtrip Activities and record the access routes needed to get to and from collecting sites. This data will be useful when asked to submit comments to Public Land Managers during the Public Comment Period on potential Public Land Access Closures proposals.

Your information could save your collecting sites from route closures and access restrictions..... Forms are also available on the ALAA Website (3 Forms): <http://www.amlands.org/437345.html>

**ALAA – DATA BASE OF COLLECTING SITES  
BY STATES  
PRIVATE COLLECTING SITES**

NAME OF SOCIETY/CLUB: \_\_\_\_\_

Address \_\_\_\_\_ City \_\_\_\_\_ State \_\_\_\_\_  
Zip \_\_\_\_\_

Field Trip Leader:

Name: \_\_\_\_\_ Email: \_\_\_\_\_

Phone: \_\_\_\_\_

Collected Material: \_\_\_\_\_  
\_\_\_\_\_

Name of Company, Ranch or Owner: \_\_\_\_\_

General Manager: \_\_\_\_\_

Contact Person: \_\_\_\_\_

Liability Insurance Requirement: Yes: \_\_\_\_\_ No: \_\_\_\_\_

Location (Address): \_\_\_\_\_

GPS: \_\_\_\_\_

Distance from your Club: \_\_\_\_\_

Frequency of leading trips to this location: \_\_\_\_\_

Number of attendance: \_\_\_\_\_

Day trip or Overnight: \_\_\_\_\_

Closest Town: \_\_\_\_\_

Groceries, gas, restaurants, motels, hardware stores or other impact on the town:

\_\_\_\_\_  
\_\_\_\_\_  
\_\_\_\_\_  
\_\_\_\_\_  
\_\_\_\_\_  
\_\_\_\_\_

Other Comments for this site:

\_\_\_\_\_  
\_\_\_\_\_  
\_\_\_\_\_  
\_\_\_\_\_

Date Filled in Form: \_\_\_\_\_

Please keep copy for your files, send a copy to [fieldtrip@amlands.org](mailto:fieldtrip@amlands.org)



**ALAA – DATA BASE OF COLLECTING SITES  
BY STATES  
GOVERNMENT COLLECTING SITES**

NAME OF SOCIETY/CLUB: \_\_\_\_\_

Address \_\_\_\_\_ City \_\_\_\_\_  
State \_\_\_\_\_ Zip \_\_\_\_\_

Field Trip Leader:

Name: \_\_\_\_\_ Email: \_\_\_\_\_ Phone: \_\_\_\_\_

Collected Material: \_\_\_\_\_

FOREST SERVICE \_\_\_\_\_ GRASSLANDS \_\_\_\_\_ BLM \_\_\_\_\_

Did you contact District Manager? Yes: \_\_\_\_\_ No: \_\_\_\_\_ Contact Name: \_\_\_\_\_

Did you have to register your group? Yes: \_\_\_\_\_ No: \_\_\_\_\_

Routes to the exact collecting site: \_\_\_\_\_

\_\_\_\_\_  
\_\_\_\_\_  
\_\_\_\_\_  
\_\_\_\_\_  
\_\_\_\_\_  
\_\_\_\_\_  
\_\_\_\_\_

GPS: \_\_\_\_\_

Closest Town: \_\_\_\_\_

Groceries, gas, restaurants, motels, hardware stores or other impact on the town:

\_\_\_\_\_  
\_\_\_\_\_  
\_\_\_\_\_  
\_\_\_\_\_

Other Comments for this site:

\_\_\_\_\_  
\_\_\_\_\_  
\_\_\_\_\_  
\_\_\_\_\_

Date Filled in Form: \_\_\_\_\_

Please keep copy for your files, send a copy to [fieldtrip@amlands.org](mailto:fieldtrip@amlands.org)

## CAN I KEEP THIS?

A guide to collecting on public lands



*Brachiopods, Madison Limestone, Fergus County, MT*

## Special Forest and Wood Products

Firewood permits for personal use are available for some areas. These allow a family to cut up to four cords of wood in specified areas for a nominal fee. Collecting dead or down wood for immediate campfire use is allowed except in posted areas.

Christmas tree permits are available for a nominal fee during the holiday season. Check with local BLM offices for designated cutting areas.

Small amounts of plants, plant parts, seeds, flowers and berries may be collected for personal use in most areas.

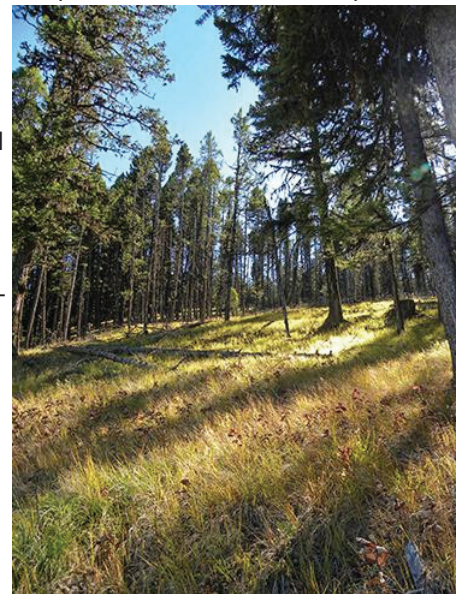
Small amounts of mushrooms, morels, truffles, and other fungi may be collected for personal use in most areas.

You may not collect species federally listed as threatened or endangered, designated by BLM as Bureau sensitive species, or listed as a protected plant by the state, unless you have a specific permit.

You should also avoid species that are candidates for listing as threatened or endangered.

Harvesting plants or plant materials such as seeds, landscaping materials, firewood and timber for commercial purposes requires a permit, and in some cases, a contract.

<https://www.blm.gov/programs/natural-resources/forests-and-woodlands/forest-product-permits>



*Sunlight coming through trees near Garnet, MT*

It's okay to collect many items such as firewood, gemstones and plant and invertebrate fossils for your personal use and enjoyment from the public lands managed by the Bureau of Land Management. But please be careful, and avoid damaging the land, vegetation, scenery or archaeological sites. Don't create hazards such as pits or trenches. Power equipment and explosives may not be used except for woodcutting and certain dredging operations.

In general, you may collect reasonable amounts of the following for non-commercial purposes:

- Flowers, berries, nuts, seeds, cones and other plant parts.
- Campfire wood for immediate use.

- Rocks, mineral specimens, common invertebrate fossils, and semiprecious gemstones.

Exceptions include collecting protected plants or gathering campfire wood in posted areas. You need a permit to collect vertebrate fossils.

Rules are generally more restrictive for wilderness areas, wilderness study areas, areas of critical environmental concern, national monuments and national landmarks, or historic and prehistoric sites and districts, so it's best to ask first.

Maps and information on specific restrictions are normally available from local BLM offices.

## MINERALS

You may prospect for minerals such as gold, silver and gemstones with hand tools including pans and metal detectors. Minerals found on mining claims belong to the claim holder and may not be collected without the claimant's permission. Mining claim records can be viewed at the BLM and county recorder offices, or online at the BLM's Mineral and Land Records System: <https://mlrs.blm.gov/>.

Please contact the BLM before engaging in activities that exceed casual use:

- Suction dredges with an intake over four inches or any operation which creates more than negligible surface or resource disturbance.

- Use of explosives or mechanized equipment.

- Commercial use or sale of minerals.

Common rock specimens may also be collected with the use of hand tools, for private use, but commercial mining of common minerals such as sand, gravel, topsoil, landscaping rocks, and similar materials requires a permit or contract.



*Hand holding a piece of calcite*

Only hobby collecting is allowed in wilderness and wilderness study areas and must not involve surface disturbance. Collecting prehistoric tools and chips or flaking debris made of precious or semiprecious stones is not allowed.

You're allowed to collect up to 25 pounds plus one piece of petrified wood per day with a maximum of 250 pounds per person per year. Permits or contracts are required for pieces over 250 pounds. You may not trade, barter or sell the petrified wood you collect without a contract from the BLM.

<https://www.blm.gov/programs/energy-and-minerals/mining-and-minerals>

## FOSSILS



*Gryphaea*

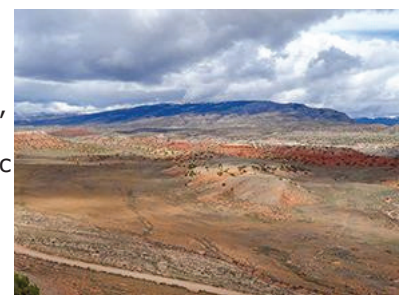
Only researchers operating under a BLM permit are allowed to collect vertebrate fossils such as dinosaurs, mammals, fish and reptiles, as well as uncommon invertebrate or plant fossils. Collected fossils remain public property and are placed with museums, universities or other public institutions for study and exhibition.

You may collect reasonable quantities of common invertebrate fossils such as mollusks and trilobites, but this must be for personal use, and the fossils may not be bartered or sold.

Resources found in caves including plant, animal and geologic features are federally protected and may not be altered, damaged, or removed.

## CULTURAL MATERIALS

Cultural materials on public lands may not be removed, damaged, disturbed, excavated, or transferred without a BLM permit. These resources include prehistoric and historic artifacts and sites, whole or broken objects and debris that were used by humans. Protected materials include arrowheads and other stone tools, grinding stones, beads, baskets, pottery, old bottles, horseshoes, metal tools, graves, and trash scatters. Modern money may be collected, but not historic coins and artifacts. Historic sites such as cabins, sawmills, graves, trail traces, mining areas, town sites, ranches and railroads are closed to collecting.



*South Pryors Anticline*

<https://www.blm.gov/Learn/Can-I-Keep-This>



# Recreational Rockhounding

## As defined in the

### United States Code of Federal Regulations

43 CFR § 8365.1-5 Property and resources.

(a) On all public lands, unless otherwise authorized, no person shall;

- (1) Willfully deface, disturb, remove or destroy any personal property, or structures, or any scientific, cultural, archaeological or historic resource, natural object or area;
- (2) Willfully deface, remove or destroy plants or their parts, soil, rocks or minerals, or cave resources, except as permitted under paragraph (b) or (c) of this paragraph; or
- (3) Use on the public lands explosive, motorized or mechanical devices, except metal detectors, to aid in the collection of specimens permitted under paragraph (b) or (c) of this paragraph.

(b) Except on developed recreation sites and areas, or where otherwise prohibited and posted, it is permissible to collect from the public lands reasonable amounts of the following for noncommercial purposes:

- 1) Commonly available renewable resources such as flowers, berries, nuts, seeds, cones and leaves;
- (2) Nonrenewable resources such as **rock and mineral specimens, common invertebrate and common plant fossils, and semiprecious gemstones;**
- (3) **Petrified wood** as provided under subpart **3622** of this title;  
**Subpart 3622—Free Use of Petrified Wood**
- (4) Mineral materials as provided under subpart **3604**; and  
**Subpart 3604—Free Use of Mineral Materials**
- (5) Forest products for use in campfires on the public lands. Other collection of forest products shall be in accordance with the provisions of Group **5500** of this title. **PART 5500—NONSALE DISPOSALS; GENERAL**

(c) The collection of renewable or nonrenewable resources from the public lands **for sale or barter to commercial dealers may be done only after obtaining a contract or permit** from an authorized officer in accordance with part **3600** or **5400** of this chapter.

**PART 3600—MINERAL MATERIALS DISPOSAL**

**PART 5400—SALES OF FOREST PRODUCTS; GENERAL**

[48 FR 36384, Aug. 10, 1983; 67 FR 68778, Nov. 13, 2002; 75 FR 27455, May 17, 2010; e-CFR data is current as of October 18, 2019]

**Subpart 8364— Closures and Restrictions** [Read them here..](#)

**Electronic Code of Federal Regulations:** [43 CFR....](#)

Do **you** have a definition of “**Recreational Rockhounding**”? If you do please let us know, we would really like to see your definition... [info@amlands.org](mailto:info@amlands.org)



**Jennifer Haley**  
**American Lands Access Association - Vice President**  
jennifer.haley@amlands.org

**What is an ALAA Representative?**

Dear Members,

As we've all seen this year especially with the Mojave Trails National Monument planning, when rockhounds get involved and work with public land management, we have been able to keep our collecting sites while building positive relationships with management. The Oregon Council of Rock and Mineral Clubs, is another great example of this experience in the work they are doing.

There are differences in the types of rockhounding and access across America. The one thing we have in common is our love for the recreational hobby. Please consider being an ALAA representative for an area in your state, your rock club's favorite collecting area, or a location that you can help keep an eye on. A rock and gem club can also be a representative.

To be a representative doesn't mean there has to be a problem to begin with in your collecting area. It's more like being a person(s) who is familiar with an area who is interested in paying attention to the public land management announcements. This is easily done by signing up for the management newsletters. If an issue does arise and public meetings are held for comments, you and others can attend and ALAA can help get the word out so more rockhounds can help.

You can be the one in your club whether or not you are the field trip leader, to annually make sure your club's favorite collecting area is well documented with up-to-date road and route information along with what is collected. Club members can even help you do the leg work.

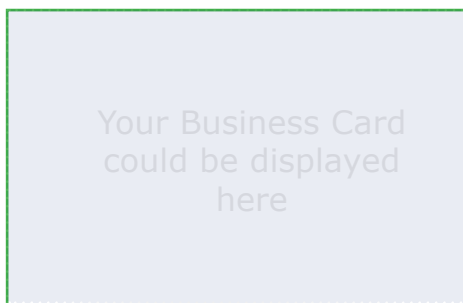
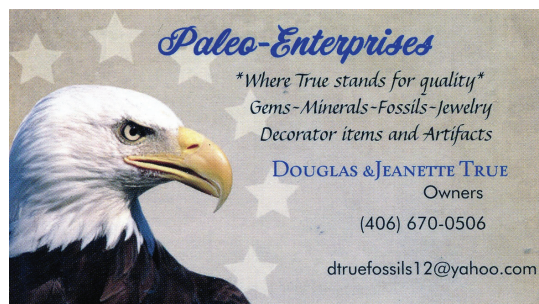
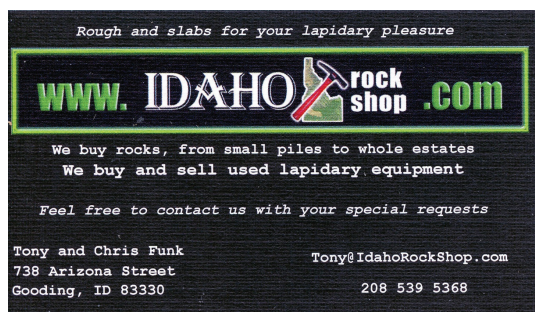
We would love to see more of you becoming involved whether by a club effort or as an individual. The future of recreational rockhounding really is up to rockhounds being involved with just as much attention as any other aspect of club's activity to help keep the life of your club fun.

We would also love to have you submit articles for the ALAA newsletters so our reader across the country can read what you are doing. A representative pays annual dues as any member of ALAA does including the organization's officers and directors. Come join us and be a part of the community of rockhounds who are helping make a difference.

If you are interested, please contact Jennifer Haley: [vice\\_president@amlands.org](mailto:vice_president@amlands.org)

**January 18 - 22, 2023**  
**57th Annual QIA Pow Wow**  
**Gem & Mineral Show**  
**235 E. Ironwood Street,**  
**Quartzsite, AZ 85346**

## Gem and Mineral Dealers Who Support ALAA with Memberships



Are you a Rock and  
Mineral Dealer?  
A Lapidary Arts Dealer?  
Join ALAA  
Your Business Card  
could be displayed here

We invite interested dealers/vendors to become a member of the American Lands Access Association and help support Recreational Rockhounding Activities.

An Annual Dealer Membership is for vendors with a valid resale license, who sell rock and gem hobby related merchandise such as; jewelry, minerals, rocks, gems, fossils, lapidary art and crafts, equipment and supplies, metaphysical and decorative items.

Interactive Membership Form (PDF) is available on the ALAA Website - Membership Page. Open with Adobe Acrobat Reader - Complete, Print, and mail to the address on form.

<http://www.amlands.org/634600.html>

## NEWSLETTER DEADLINE

Articles for the NEWSLETTER are DUE to the Editor by the  
**10th of January - 10th of April - 10th of July - 10th of October**

For inclusion in each Quarterly Newsletter

Please send articles to: **editor@amlands.org**

Please send articles in plain text, MS Word (.doc)

Pictures in jpg format at not less than 96 dpi or more than 200 dpi.

***Please do not send articles in PDF format.***

**Concerns or questions on article format please contact the editor at  
editor@amlands.org**

Permission to Reprint All or Any Part of this Newsletter is Hereby Granted,  
Provided, Credits and Citations are Maintained. *ALAA Does not sell Email Information.*



# AMERICAN LANDS ACCESS ASSOCIATION

## NEW MEMBERSHIP and ANNUAL RENEWAL FORM

PLEASE PRINT ALL INFORMATION

Must be postmarked by December 31<sup>st</sup> of each year

Member / Contact Name: \_\_\_\_\_  
Last First

Member / Contact Name: \_\_\_\_\_  
Last First

Organization Name: \_\_\_\_\_

Address: \_\_\_\_\_  
Street City State Zip Code

Mailing Address: \_\_\_\_\_  
(if different from above) City State Zip Code

Phone Number: \_\_\_\_\_  
Primary Secondary

Email Address: \_\_\_\_\_

Alternate Email address: \_\_\_\_\_

Member Signature: \_\_\_\_\_ Date: \_\_\_\_\_

Dues are: New Member: ☐ ☒ Donation: ☐ ☒  
\$25 for an individual or couple Renewal: ☐ ☒ Amount Enclosed: \$ \_\_\_\_\_  
\$50 for a Club or Society

Leave a  
note for us:

Please check an option to subscribe to our Email ☐ ☒ or Snail Mail ☐ ☒ list.

Please make checks payable to: American Lands Access Association (ALAA)

Please mail this completed form along with your check to the following address:

American Lands Access Association  
C/O Membership Chairman  
P.O. Box 54398  
San Jose, CA 95154

For more information or questions, please email: [membership@amlands.org](mailto:membership@amlands.org)

ALAA is a grassroots 501(c)(4) Educational, non-profit organization. Our organization is present wherever there are hobbyists and recreational users of public lands whose interests and concerns are not being heard or are being jeopardized by proposed policy, regulation or legislation at the local, state and federal level.

ALAA Membership Renewal Form Rev. 2016

**Click on the above Membership Form to use the interactive Form  
(Fillable when opened in Adobe Acrobat Reader)**



ALAA Editor  
2010 West Ave. K #528  
Lancaster, CA 93536-5229



Remember to Renew your  
ALAA Membership before  
December 31, 2022

Thank you for your partnership this year and over the many years we've worked together. We look forward to working together in 2023.

The Mojave Trails National Monument has been in the spotlight this year with much to be grateful for now that BLM has stated for the record their intention is to keep rockhounding in the monument plan.

With more work on that agenda, it looks like in January ALAA may begin sending you updates between the newsletters via email on that project to keep you informed. We have heard through the wind there may be a new monument in the works, which once again reminds us all we need to get involved, stay involved and do the work which is needed to keep recreational rockhounding in our favorite collecting areas.

Clubs and Societies \$50.00 - Individual/Family \$25.00 -- Dealers and Vendors -- \$25.00 (Renewal Form included on page 11)

Thank You for your Support-Your ALAA Board of Recreational Rockhounds