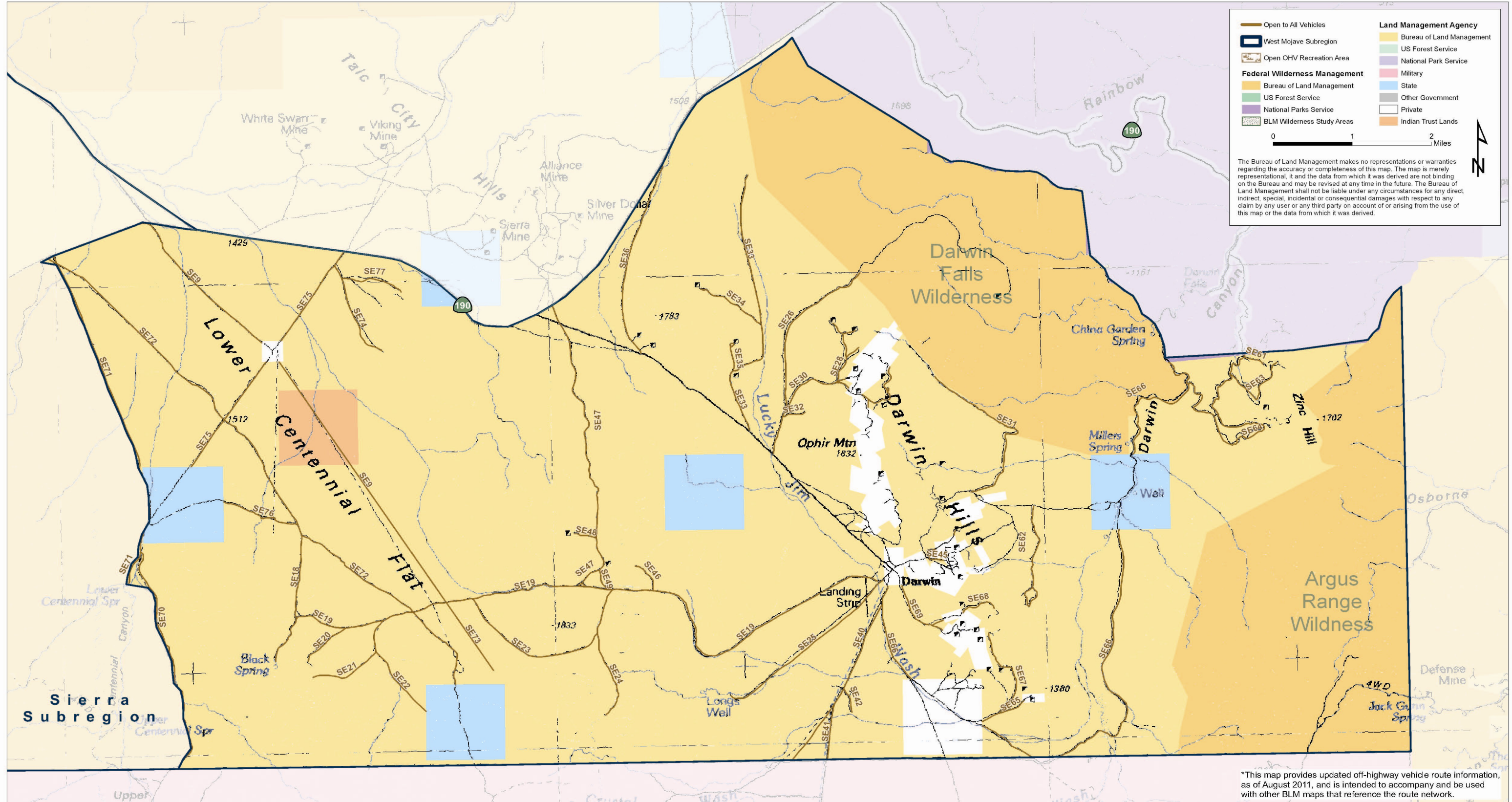




Darwin Subregion

Off-Highway Vehicle Route Supplement*

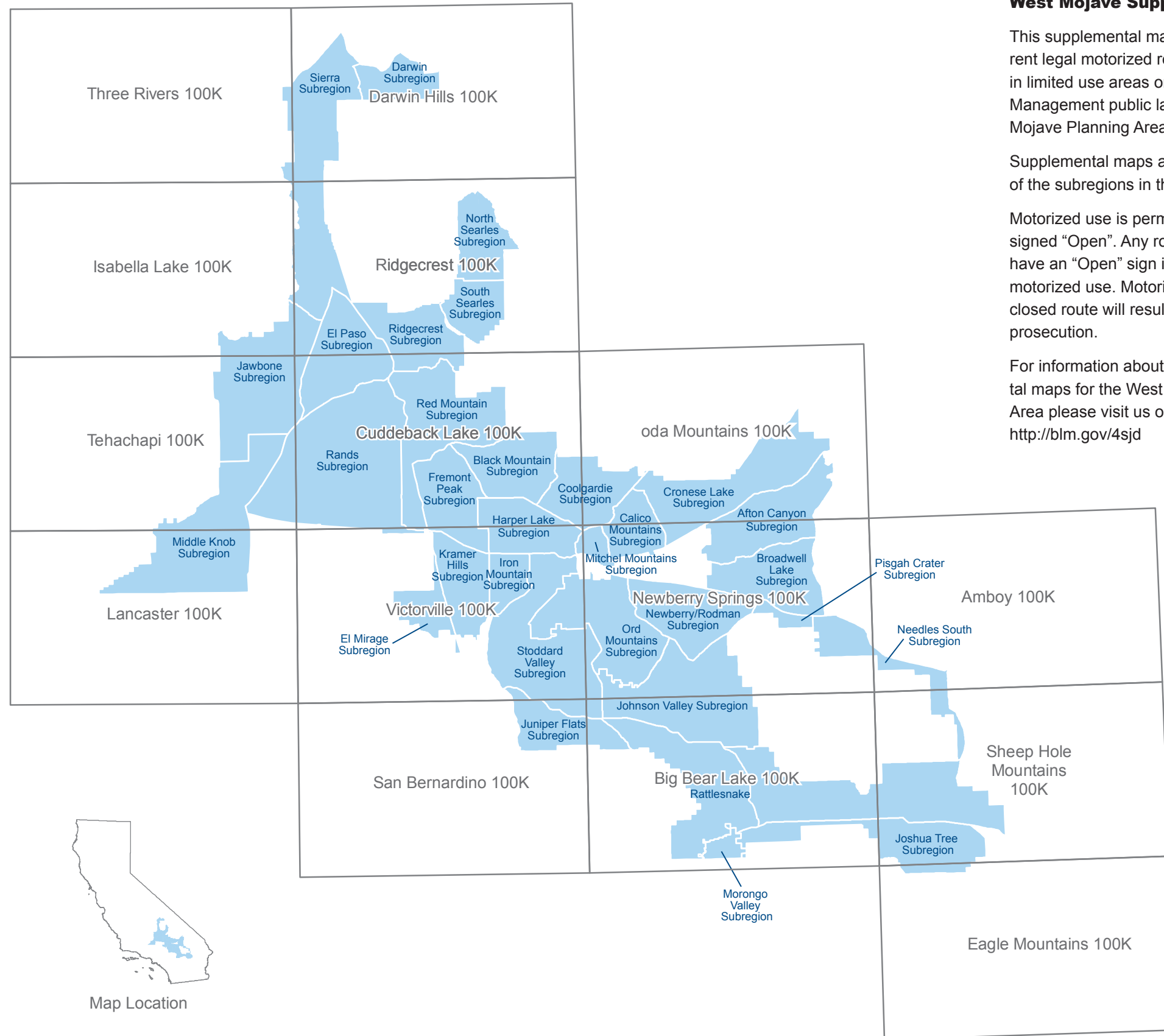
Bureau of Land Management - California



*This map provides updated off-highway vehicle route information, as of August 2011, and is intended to accompany and be used with other BLM maps that reference the route network.

Route Subregion Locator Map

A comparison of Surface Management Status 100K series maps to Off-Highway Vehicle Route Supplement maps



West Mojave Supplemental Map

This supplemental map includes the current legal motorized road and trail network in limited use areas on Bureau of Land Management public lands in the West Mojave Planning Area.

Supplemental maps are available for each of the subregions in the planning area.

Motorized use is permitted only on routes signed "Open". Any route that does not have an "Open" sign is not legal for motorized use. Motorized use of any closed route will result in a fine or criminal prosecution.

For information about the 33 supplemental maps for the West Mojave Planning Area please visit us online at: <http://blm.gov/4sjd>



Visit www.treadlightly.org for tips on responsible recreational riding and remember:

- Travel responsibly
- Respect the rights of others
- Educate yourself
- Avoid sensitive areas
- Do your part

Help preserve the beauty and inspiring attributes of our lands and waters for yourself and future generations.



Follow "Leave No Trace" guidelines to minimize the impacts of your next visit to public lands:

- Plan ahead and prepare
- Travel and camp on durable surfaces
- Dispose of waste properly
- Leave what you find
- Minimize campfire impacts
- Respect wildlife
- Be considerate of other visitors

For more information visit www.lnt.org

Responsible land use depends more on your attitude and awareness than on rules and regulations.

NOTICE

MOTORIZED USE IS PERMITTED ONLY ON ROUTES SIGNED "OPEN." ANY ROUTE THAT DOES NOT HAVE AN "OPEN" SIGN IS NOT LEGAL FOR MOTORIZED USE. MOTORIZED USE OF ANY CLOSED ROUTE WILL RESULT IN A FINE OR CRIMINAL PROSECUTION.



Map Location